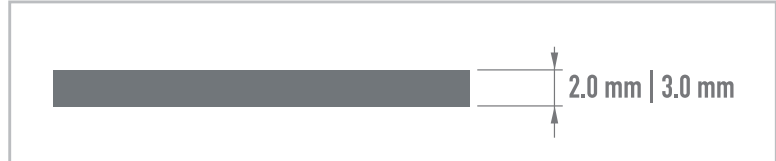
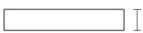



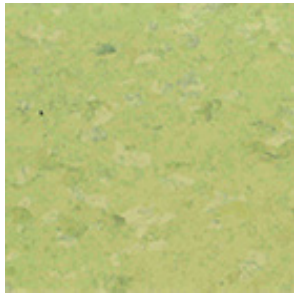
motiva plus

- Sheets and tiles
- Suitable for heavy traffic areas
- Extreme durability
- Smooth non porous surface finish
- Low VOC certified material
- CA 01350 compliant
- May contribute with points to LEED program
- Free of PVC and halogens
- Cigarette burn resistant
- 20 colors

rubber flooring for heavy traffic areas, with smooth surface
and a balanced tone on tone design



Art.				
2233-01 2233-03	 2.0 mm Homogeneous	50 x 50 cm 1.12 x 12 m \cong	20 units 1 sheet	3.6 kg/m ²
2233-35 2233-37	 3.0 mm Homogeneous	50 x 50 cm 1.12 x 12 m \cong	20 units 1 sheet	5.1 kg/m ²
2233-28 2233-30	 3.0 mm Double backing	50 x 50 cm 1.00 x 12 m \cong	20 units 1 sheet	5.1 kg/m ²



2001 | ACACIA



2007 | TRIGO



2005 | ATARDECER



2002 | TOMATINA



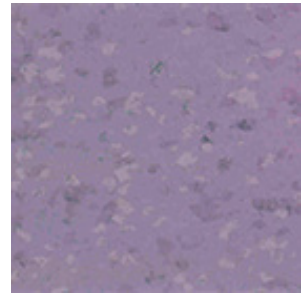
2006 | AGUANIEVE



2008 | ARROYO



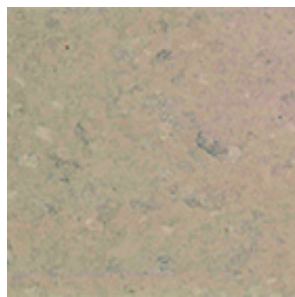
2013 | OCEANO



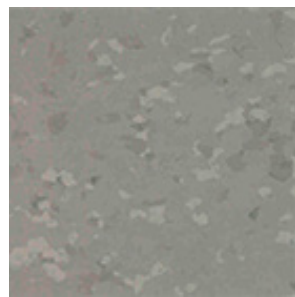
2004 | VIOLETA



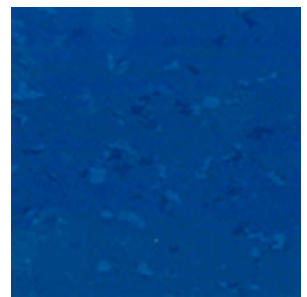
2003 | GRAMA



2018 | TALPA



2019 | MADERO



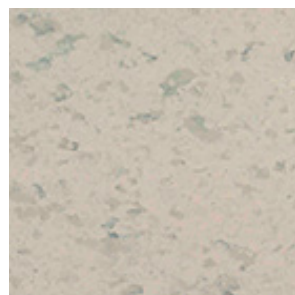
2020 | ANOCHECER



2010 | PIEDRA GRIS



2016 | NIEBLA



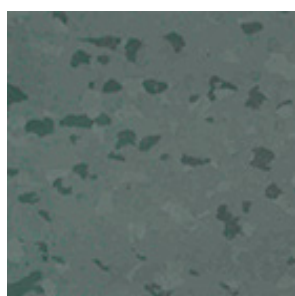
2009 | BRISA



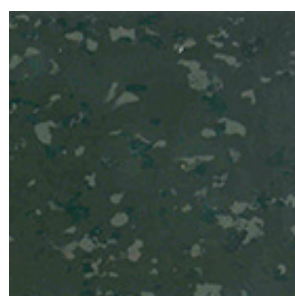
2012 | NUBARRON



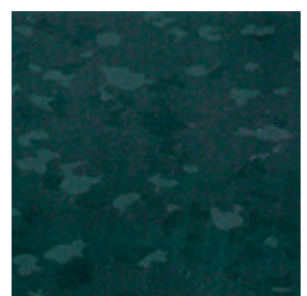
2011 | CANTO RODADO



2015 | TORMENTA



2017 | CACAO



2014 | NOCTURNO